

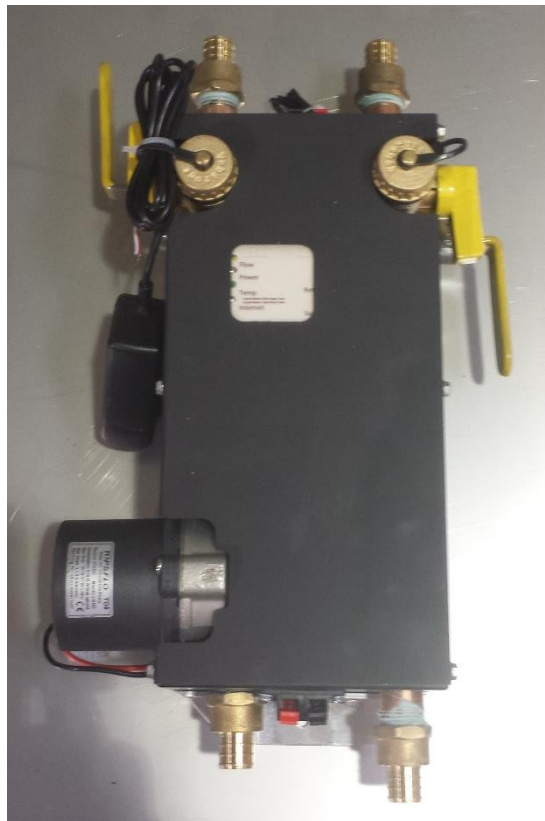


SPA15 - All-in-one Pump Station

Sunvelope's Integrated Solar Pump Stations simplify installations by combining all necessary measurement, safety, fill, drain, flow and solar system controls into one easy-to-install assembly. These all-in-one assemblies save installers the time it takes to locate, purchase and install these items separately. Additionally, Sunvelope's pump station integrates Amatis' Heat Energy Meter, which collects and real-time performance data, and its Border Router which uploads data to its web-based Energy Dashboard. The Dashboard converts raw data to graphic illustrations for detailed system monitoring by installers and end users. Integrated pump stations also save space and provide a professional-looking installation that customers will notice and appreciate.

Features

- Insulated and pre-plumbed all-in-one wall mounted assembly.
- Temperature sensors for supply and return lines
- Check Valve
- Flow Sensor
- Fill and Purge Valves
- Air Eliminator with Manual Vent
- Variable Speed DC Pump power by solar panel that optimizes Collector's output
- Photovoltaic panel to power pump
- High temperature limit switch
- Quick connect wiring terminals



System Requirements:

High speed Internet connection (configured for DHCP)

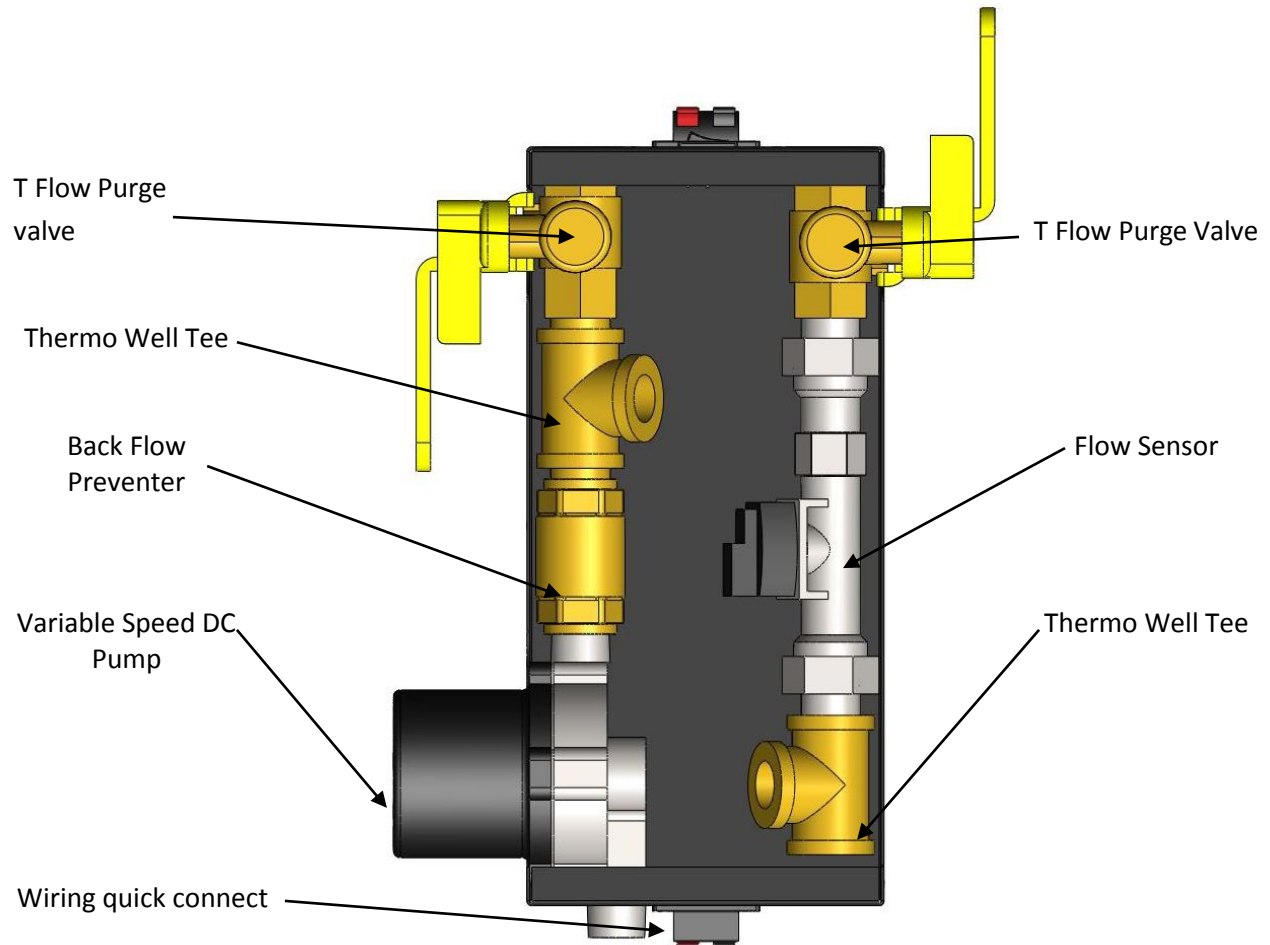
Ethernet and electric outlets for Border Router (within 200ft of pump station)

TECHNICAL SPECIFICATIONS – SPA15							
Piping / Components Material	Max working pressure/ temperature	DC Pump (6-24V)	Pressure Relief Setting	End Connections	Power Requirements	Unit Dimensions	Shipping Weight
Brass / Stainless Steel	160 psi/ 230° F	Brushless motor; stainless steel	150 psi/ 180° F	½" brass male NPT	10 Watts	15" x 8" x 5"	10 lbs.

Key Components

SUPPLY

RETURN



TD5 PERFORMANCE

